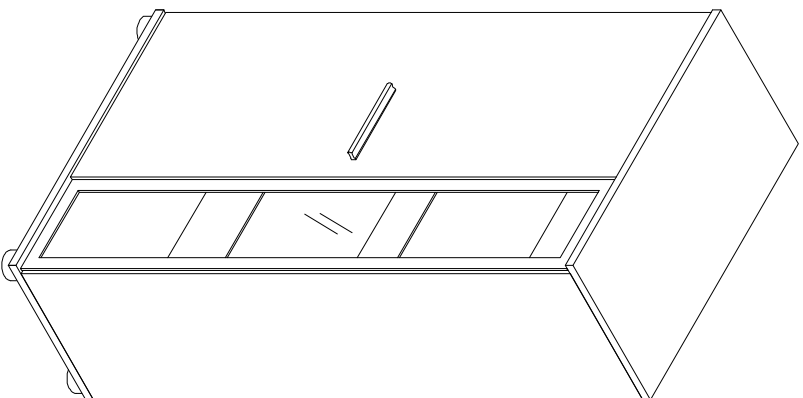


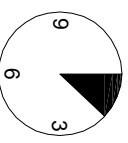
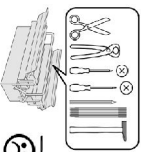
PINO

WST



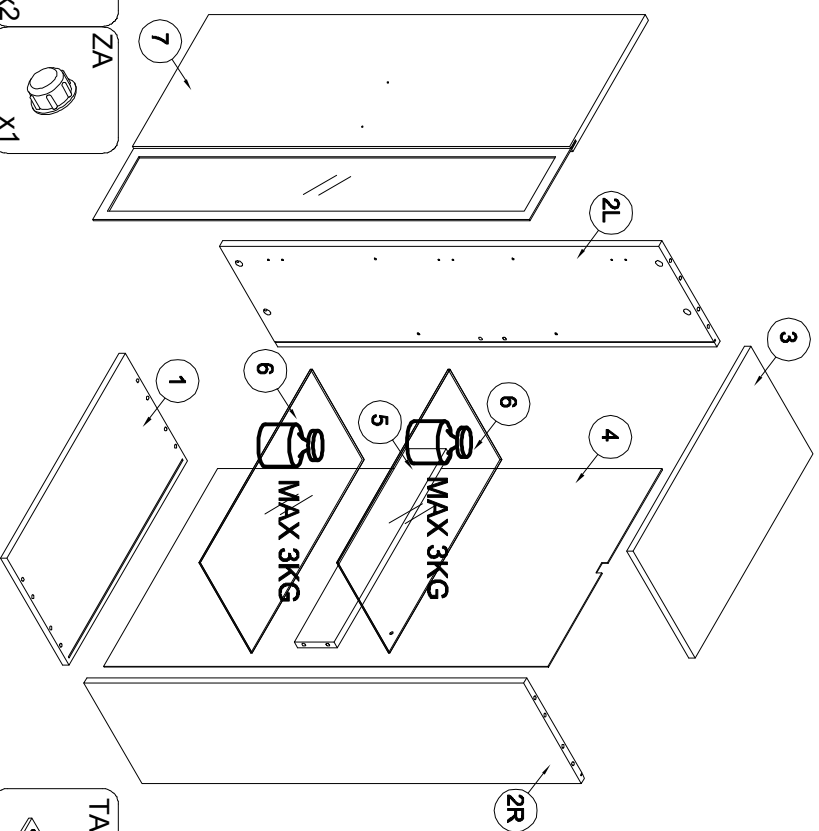
20.11.2015

- (D)** Montageanleitung
- (FR)** Notice de montage
- (NL)** Handleiding voor de montage
- (CZ)** Montážní návod
- (HU)** Szerelési útmutató
- (TR)** Montaj talimatı
- (GB)** Assembly Instructions
- (IT)** Istruzioni di montaggio
- (PL)** Instrukcja montażu
- (SK)** Návod na montáž
- (RO)** Instrucțiunile de montaj
- (RU)** Инструкции по монтажу

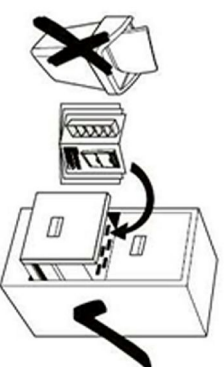
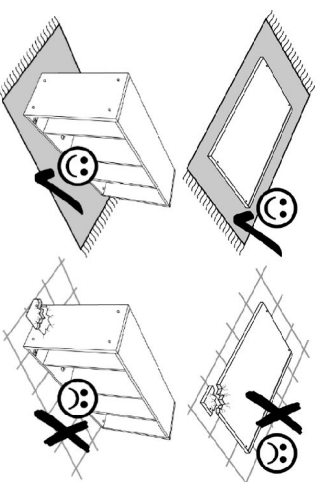


1-1,5

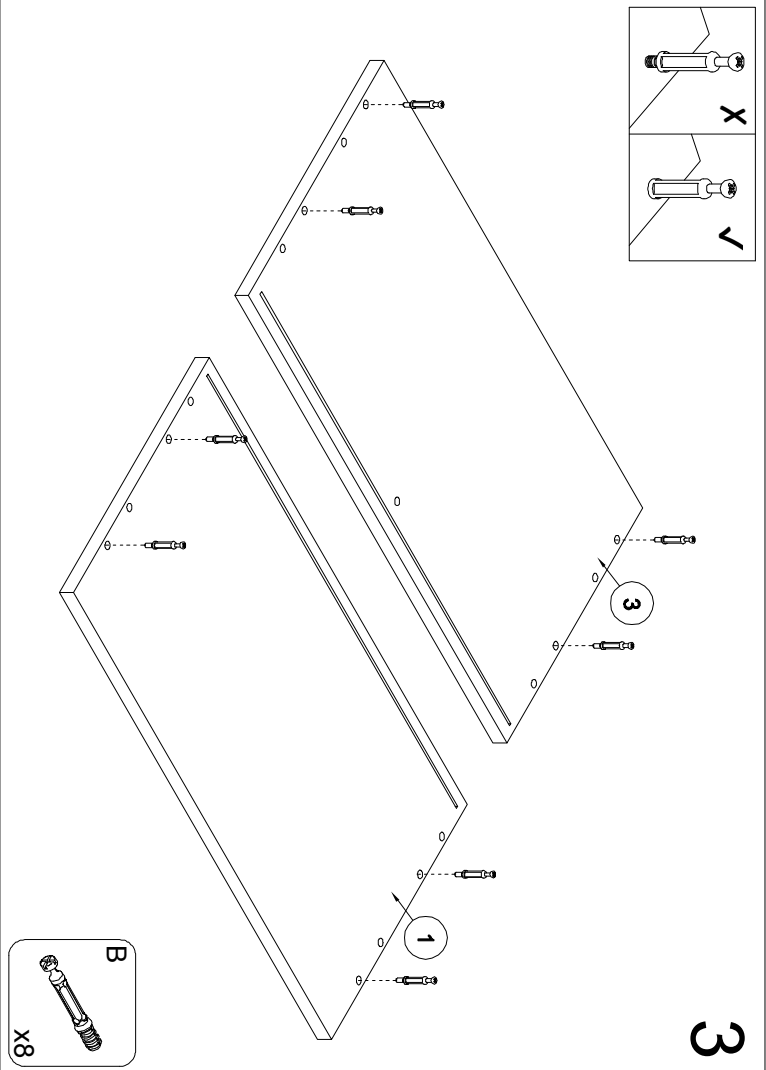
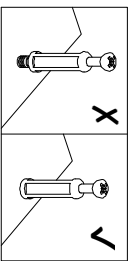
1



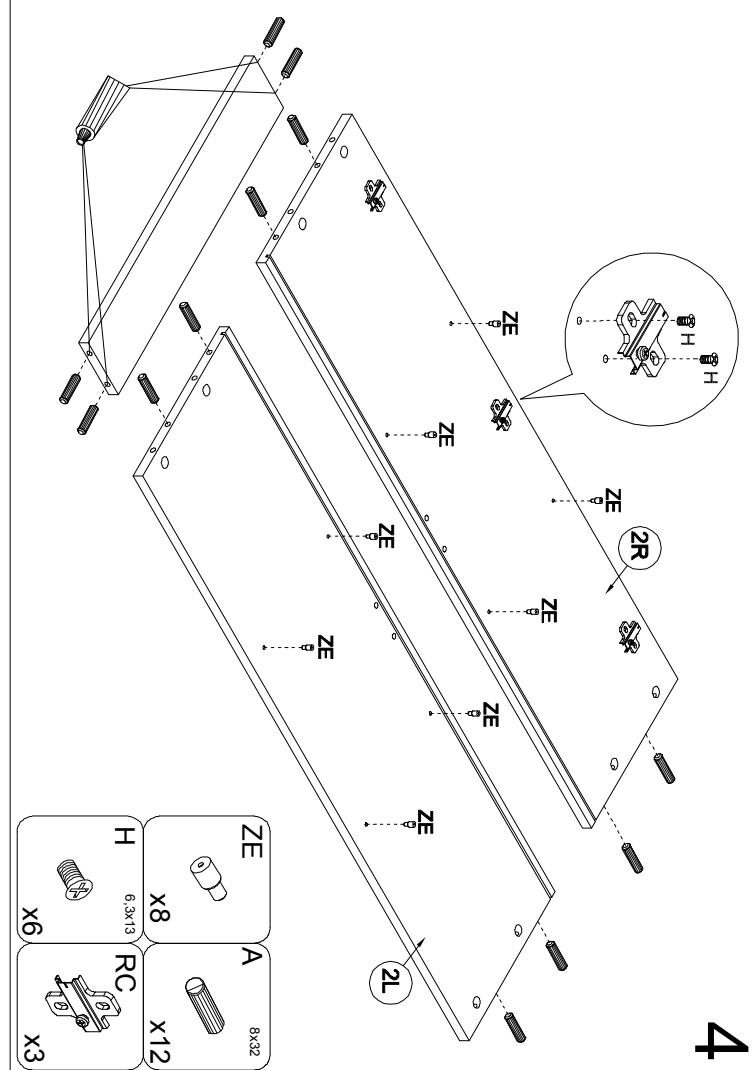
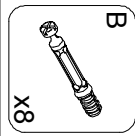
ZF X2 	ZA X1 	ZE X8 	A X12 	B X8 	YS X4 	YA X2 	TA X1
H X6 	RC X3 	C X8 	Z X8 	X X6 	ND X4 	TB X1 	W X1
NA X10 	PC X3 	GLUE X1 	Z X8 	X X6 	ND X4 	TB X1 	W X1



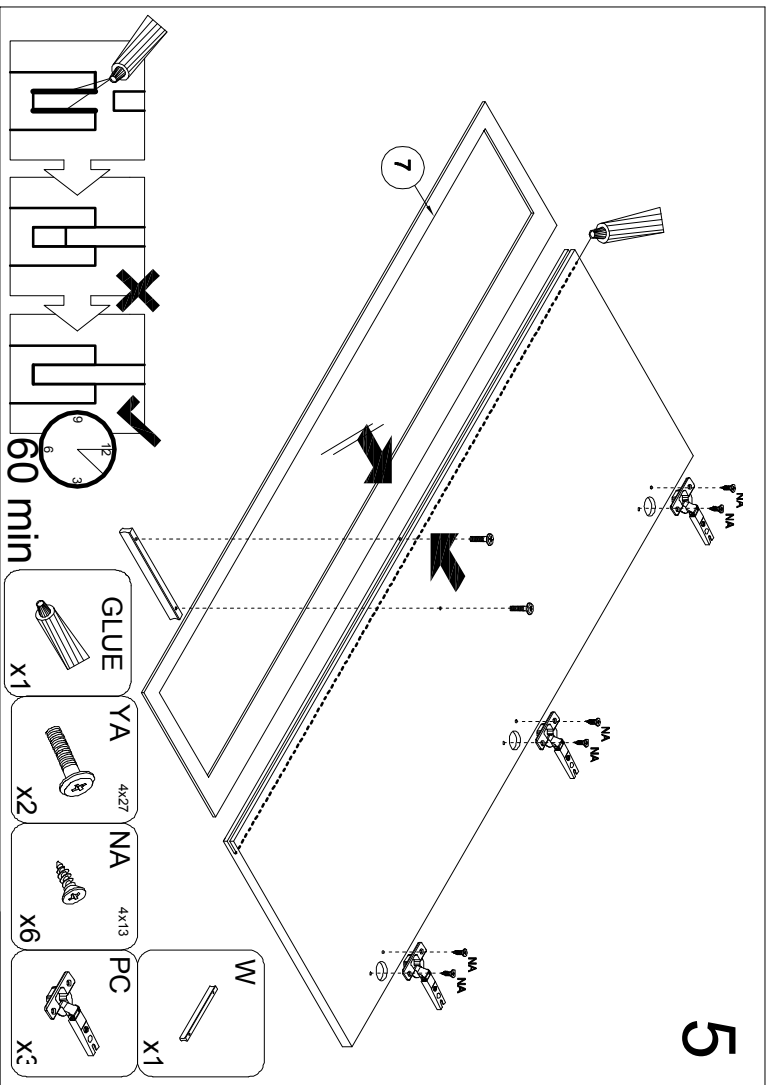
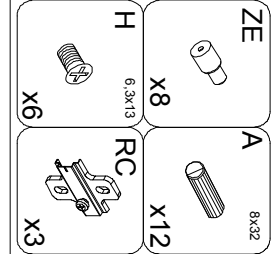
2



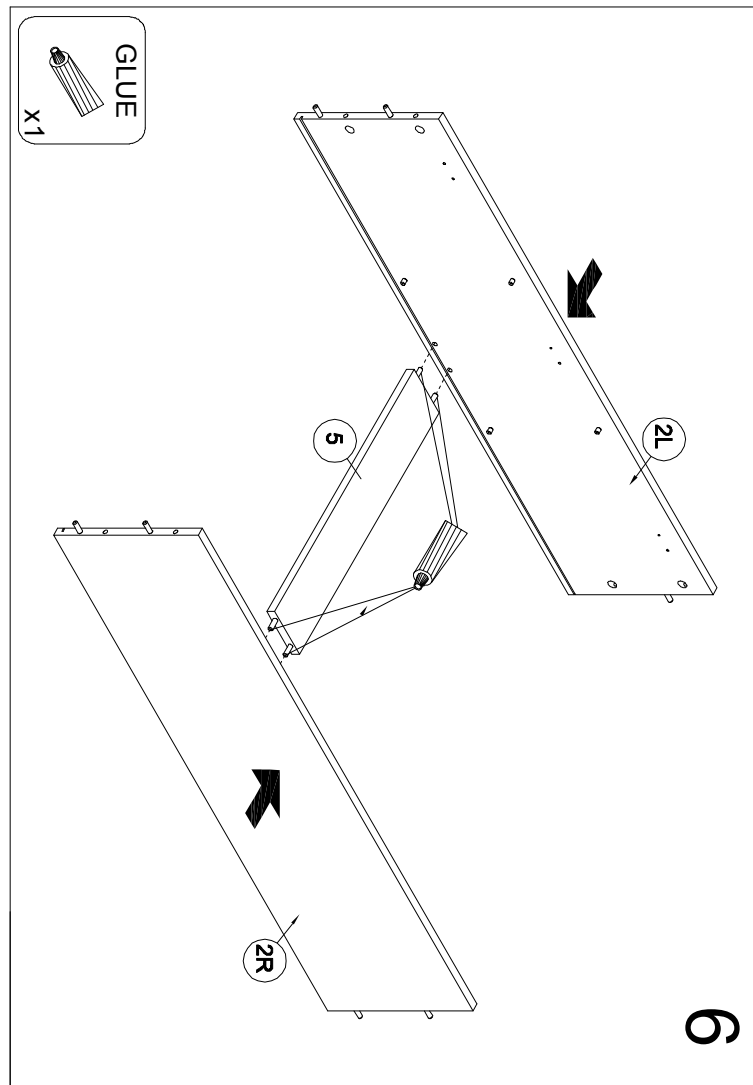
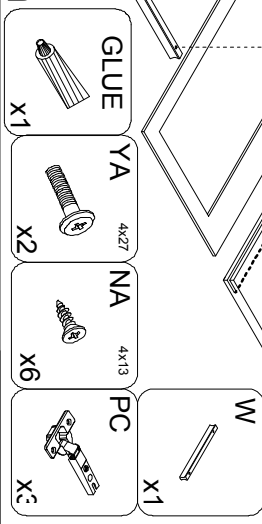
3



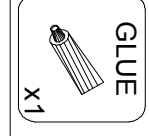
4

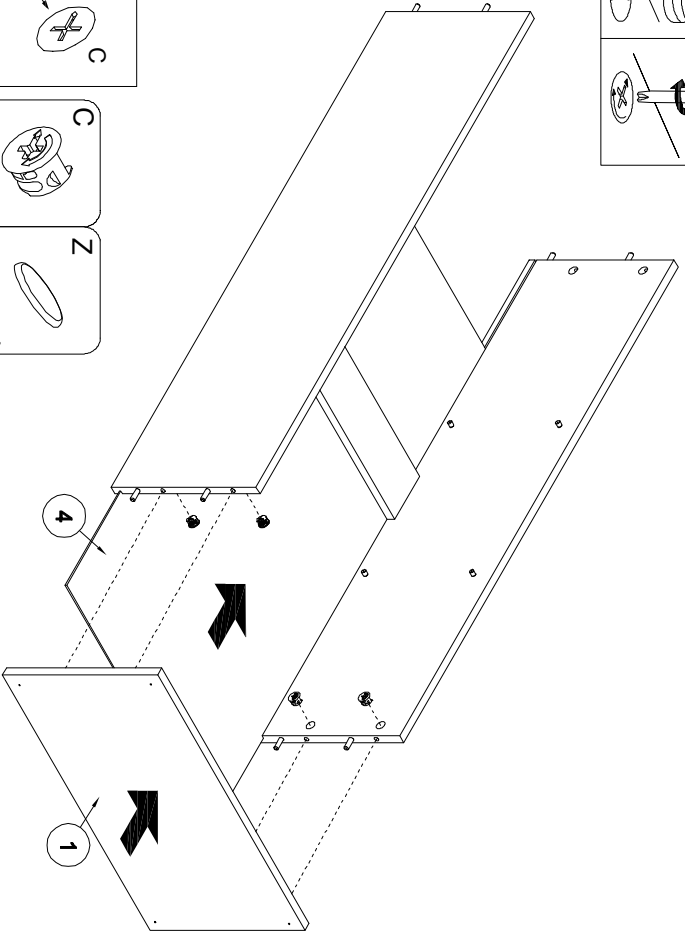
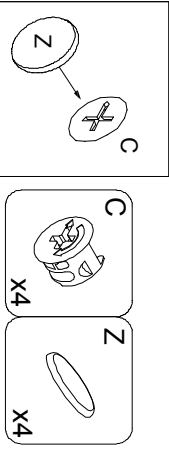
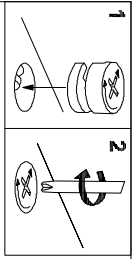


5

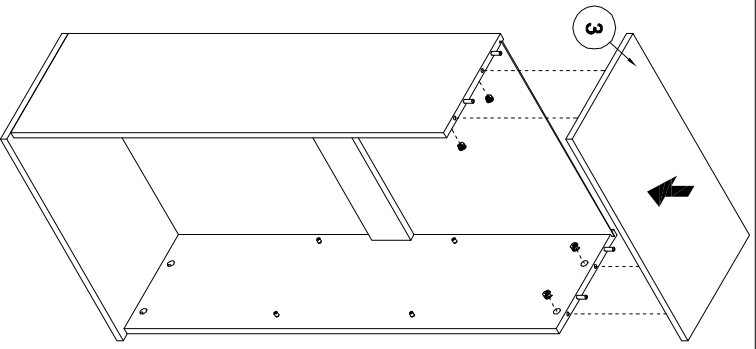
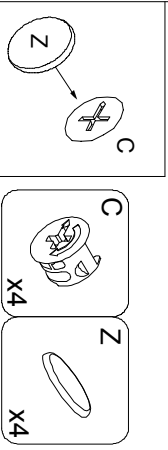
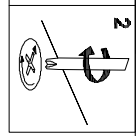
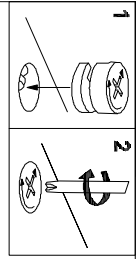


6

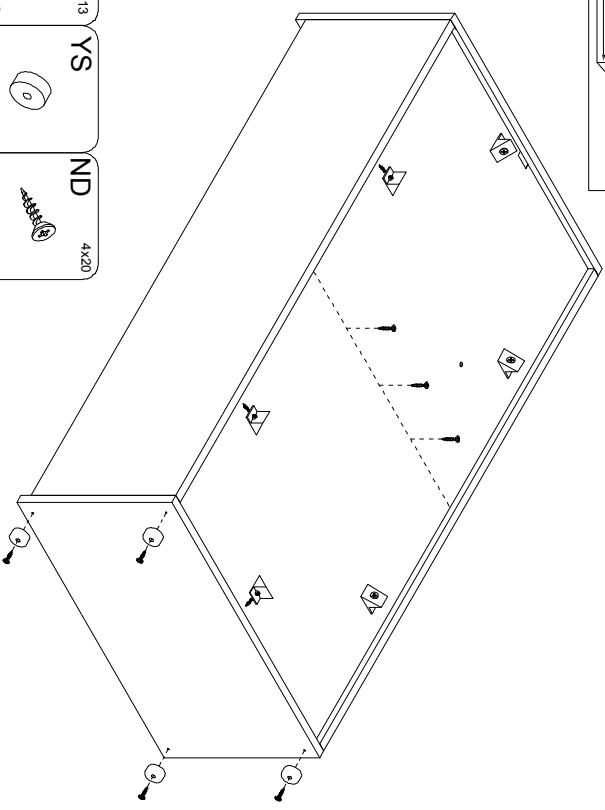
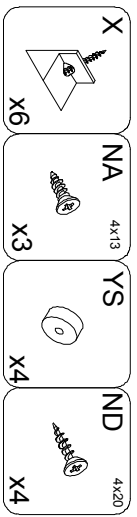
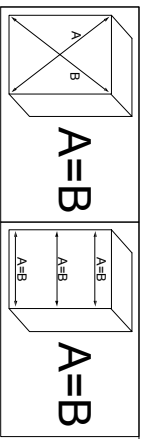




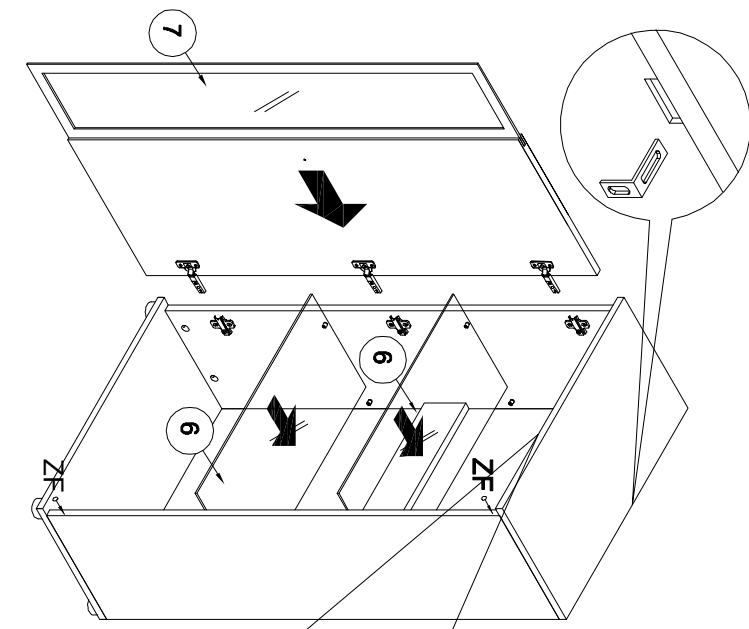
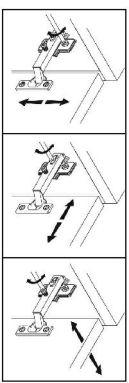
7



8



9



10

